

Heavy Duty Moisture Meter

Fast, accurate, wood moisture measurements with built-in self-calibration

Features:

- Super large 1.4" (36mm) LCD display
- Displays wood moisture content from 9-30% with a 0.1% resolution
- Memory contains 9 material groups including calibrations for approximately 150 species of wood
- Built-in self calibration with manual temperature compensation adjustment
- Record/Recall MIN/MAX readings
- Data Hold plus Auto shut off
- Built-in RS-232 serial interface for connection to a PC
- Complete with 2 pin moisture probe, 40" cable, 10 spare pins, protective holster, and 9V battery.

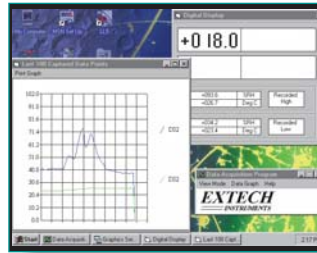


Specifications:

Range / accuracy(%rdg+digits):	9% to 30% / $\pm(4\%+5d @9-24\%)$
Resolution	0.1%
Sampling time:	0.8 second
Manual Temperature Compensation:	32 to 122°F (0 to 50°C)
Dimensions/Weight:	Meter: 7x2.9x1.3" (180x72x33mm) / 12.3oz (350g) Probe: 0.9" (23mm)D 6.5" (165mm)L

Interface Options:

- Optional Windows® Data Acquisition Software and serial cable enable user to display and capture readings on a PC, and set time intervals and alarms
- Optional battery operated Datalogger module stores over 8000 readings for later transfer to a PC



Applications:

- Wood products, Furniture making/repair, wood floor manufacturing & installation, wood drying, building inspection, pest control, lumber inspection, fire damage, and water damage



Ordering Information

- 407777**Heavy Duty Moisture Meter
- 407779**Spare contact Pins (package of 10)

Accessories

- 156119**117 VAC Adaptor
- 156221**220 VAC Adaptor
- 140001**Hard Vinyl Carrying Case

Options

- 407001**Data Acquisition Software and cable
- 380340**Datalogger Module, Battery powered

Models in the Heavy Duty Series include:

Thermometers • Anemometers • Infrared • Humidity • Light • Moisture • pH • Dissolved Oxygen • Conductivity • Pressure