

Personal Noise Dosimeter

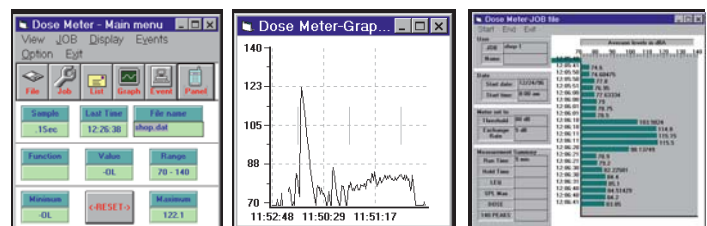
Measure total sound exposure over an 8-hour period

Features:

- Low cost, lightweight, easy to use, personal noise dosimeter
- Perform OSHA and IEC Noise accumulation surveys
- Adjustable Criterion Level, Exchange Rate, and Threshold
- Applications include Personal accumulated noise exposure measurement, Workplace noise assessment, OSHA and other regulatory agency compliances
- Optional 94/114dB calibrator to perform “before” and “after” calibration checks per ANSI standards
- Stores up to 5 dosimeter surveys. Data includes Start/Stop Time, %Dose, TWA, peak flags, when used in the Dosimeter mode
- Bi-directional RS-232 with Windows® 95/98/NT/2000/ME/XP compatible software to control setup and retrieve stored events or analyze real time measurements. Complete with 9 pin to 25 pin adaptor, and RS-232 cable.
- Includes belt clip and clip-on 0.5” microphone with 2.6ft (0.8m) cable, 4 AAA batteries, mini screwdriver and carrying case, software, and cables



Specifications	
Standards	Meets ANSI S1.25(1991) Type 2, ISO-1999, BS 402 (1983)
Range/Resolution	70 - 140 dBA / 0.1dB
Digital Display	LCD 0.01-9999%
Criterion Level	80, 84, 85, or 90dB
Exchange Rate	3, 4, 5 or 6 dB
Threshold Level	70-90 (1db steps)
Frequency weighting	A
Response Rate	Fast or Slow
High Level Detector/Peak Flag	115dB / 140dB
Dimensions/Weight:	4.2x2.5x1.3" (106x64x34mm) 8oz. (227g) incl. batteries
Microphone	1/2 inch electret condenser with 31" cable
Battery Life	34 hrs
Event Storage	5 surveys
RS232 Interface	yes
Real time clock	yes



Includes PC Windows® compatible software to maintain records and statistically analyze acquired data

Ordering Information:

- 407355**Noise Dosimeter w/RS232 Interface
- 407355-NIST**Noise Dosimeter w/RS232 Interface with NIST certificate
- 407766**94/114dB Sound Level Calibrator

EXTECH INSTRUMENTS CORPORATION
285 Bear Hill Road, Waltham, MA 02451-1064, U.S.A.
Phone: 781-890-7440 • FAX 781-890-7864
ISO 9001:2000 CERTIFIED

“Make mine an Extech!”™
www.extech.com



08/14/06 R2